



# MONTHLY MEMBERSHIP PROGRESS REPORT

District 35 N

Results as of: 06/30/2019

GMT: OPEN

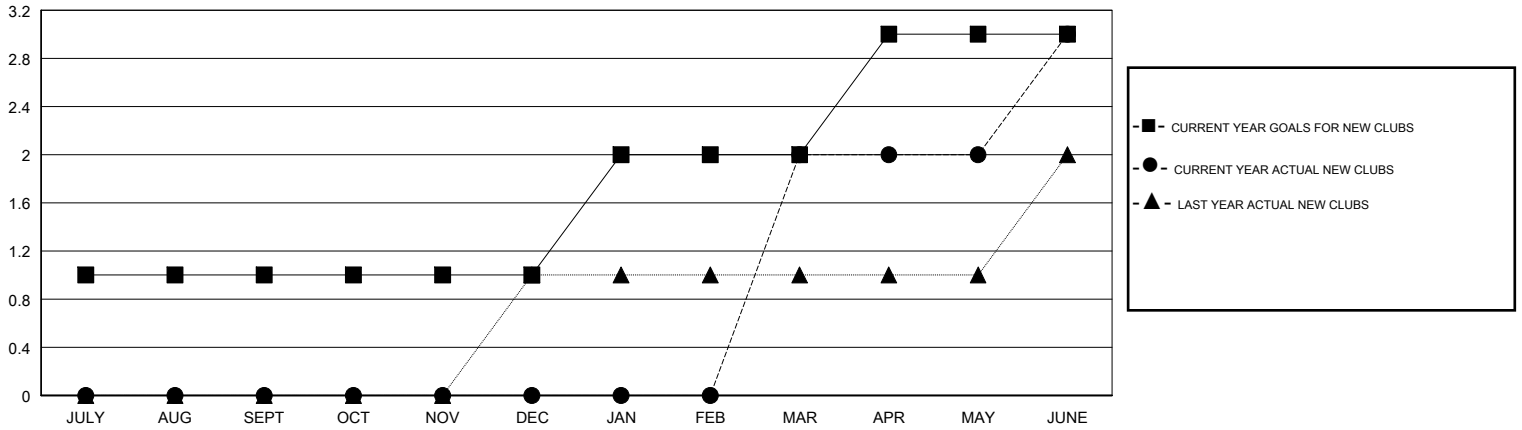
LOCATION FLORIDA

GMT CA

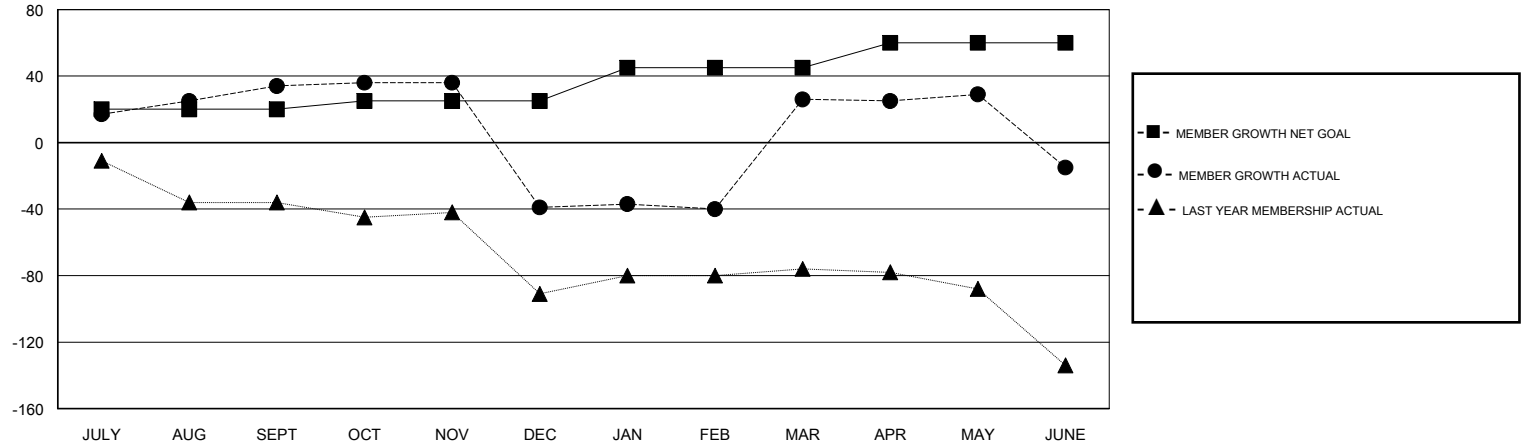
Clubs			
RESULTS FOR 2018-2019			
QUARTER	NEW CLUB GOAL	NEW CLUBS	DROPPED CLUBS
JULY/AUG/SEPT	1	0	0
OCT/NOV/DEC	0	0	0
JAN/FEB/MAR	1	2	0
APR/MAY/JUNE	1	1	0

Members			
RESULTS FOR 2018-2019			
QUARTER	MEMBER GROWTH NET GOAL	MEMBER GROWTH ACTUAL	DROPPED MEMBERS ACTUAL (including transfers)
JULY/AUG/SEPT	20	87	31
OCT/NOV/DEC	5	34	103
JAN/FEB/MAR	20	95	19
APR/MAY/JUNE	15	110	141

GOALS AND ACTUAL NEW CLUBS CUMULATIVE



GOALS AND ACTUAL MEMBERS CUMULATIVE



DROPPED CLUBS: 0	41 CLUBS OF 61 ADDED 1 OR MORE NEW MEMBERS	<u>GENDER DISTRIBUTION</u>	
DROPPED MEMBERS		MALE	747 (51.52%)
DECEASED	17	FEMALE	703 (48.48%)
CLUB CANCELLED	0	Women Percentage Fiscal Year Goal: 20%	
OTHER	277	TOTAL FAMILY UNIT MEMBERS	287
TOTAL	294	FAMILY MEMBERS PAYING HALF DUES	154

[CLICK HERE FOR CUMULATIVE MEMBERSHIP DATA](#)